


## Runnymede Colliers Wood, SW19 2PG

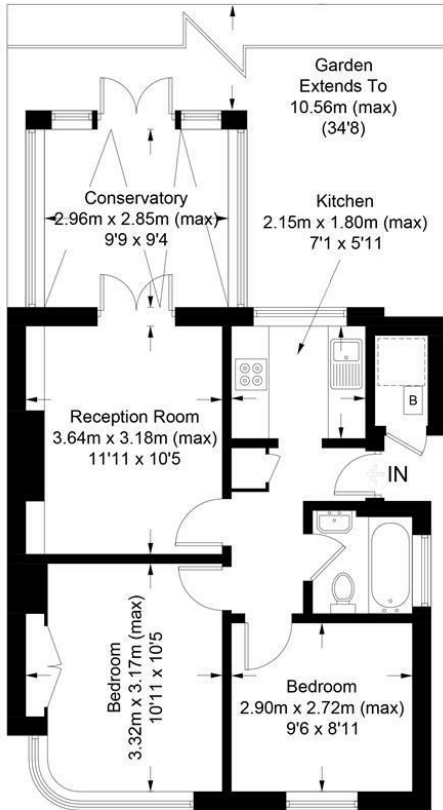
**Offers Over £400,000 Leasehold**



**A well presented two double bedroom ground floor garden maisonette with a conservatory, located close to Colliers Wood High Street and Tube station. Spacious throughout with good sized lounge, dining area and modern kitchen, direct access to a delightful south facing rear garden and off street parking. This lovely property would make an Ideal first time purchase for any one looking to get onto the SW19 ladder.**

**Runnymede, SW19**  
 Approximate Gross Internal Area = 54.5 sq m / 587 sq ft

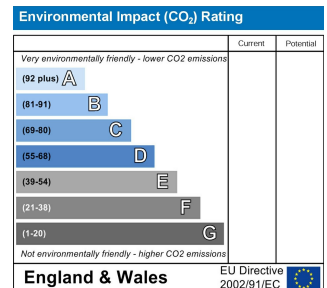
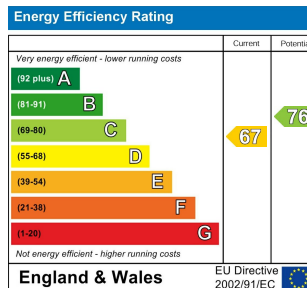
 = Reduced headroom below 1.5m / 5'0



This floor plan is for representation purposes only and is not drawn to scale.  
 The Gross Internal Area includes outbuildings shown on the plan.  
 Whilst every attempt has been made to ensure the accuracy of the plan measurements of doors, windows and rooms are approximate only and should be checked before making any decisions reliant upon them.  
 Copyright Bespokeplans.co.uk (ID701653)



- Two Double Bedrooms
- Off Street Parking
- Private South Facing Garden
- Ideal First Time Purchase
- Close To Tube Station
- Amenities Close By



For Free Mortgage Quote and Best Mortgage Rates, call an Ellisons Mortgage Advisor on 020 8544 0518



Although these particulars are believed to be correct, their accuracy is not guaranteed and they do not form part of any contract.

Celebrating 30 years of successful Sales and Lettings in Merton

